

DETA



Utilities

Product Catalogue 2011/2012

Cable

Ventilation

Safety Alarms

Lighting

Commodities

Stephen Glover

WELCOME TO THE DETA UTILITIES CATALOGUE

In addition to our extensive range of Wiring Accessories, this catalogue highlights the supplementary ranges on offer from **DETA** Electrical and Stephen Glover.

Inside you will find a clear and concise description of our products, so selecting the appropriate product for the job couldn't be simpler.

Sales Support

Whether you're a wholesaler, contractor, engineer, specifier or end user, our nationwide team of sales staff is on hand to help you with product selection and any other queries you may have.

Technical Support

If you need installation advice, a problem-solving or technical specification, then call our Technical Support Line. A team of dedicated engineers is permanently on hand to help answer your queries and resolve any issues and product data sheets are available online at our website.

Marketing Support

A comprehensive suite of paper-based and electronic publications is available. Additionally, we may be able to assist you with your own promotional leaflet by providing illustrations and product files.

For more information on **DETA'S** electronic publication, please visit our website at **www.detaelectrical.co.uk**

Useful Numbers

Sales Hotline +44 (0)1582 544 544

Export Hotline +44 (0)1582 544 540

Technical Hotline +44 (0)1582 544 548

Email: sales@detaelectrical.co.uk

www.detaelectrical.co.uk

CONTENTS

Cable 4 – 8

Co-Axial Cable	5
Satellite Cable	5
Alarm Cable	6
Telephone Cable	6
Data Cable	7
Speaker Flex / Bell Wire	7
Arctic Cable	8
Sheath Flex	8

Ventilation 9 – 16

Axial Fans	10
Centrifugal Fans	11
Low Voltage Fans	11
Shower Fans	12
Commercial Fans	13
Flexible Ducting	14
Fixing Kits	14
External Grilles	14
Hand Dryers	15 - 16

Safety Alarms 17 – 21

230V AC Smoke Alarms	18
9V DC Smoke Alarms	18
Bases	18
Alarm Specification Table	19
Carbon Monoxide Alarms	20
Sealed Lead Acid Alarm Batteries	21

Lighting 22 – 35

Fire Rated Downlights	23 - 28
Transformers	29
Stand Alone PIR Detectors	30
Photocells	31
Floodlights	32
Bulkheads	33 – 34
Low Energy Luminaire	34
Outdoor Lanterns	35

Commodities 36 – 45

Metal Boxes	37
Dry Lining Boxes	37
Junction Boxes	38
Connector Boxes	39
Earthing Box	39
Strip Connectors	39
PVC Tape	40
Flex Connectors	40
Plugs	41
Extension Leads	42
Trailing Sockets	43
Adaptors	43
Bell Transformers	43
Fuses	44
Accessories	45
Door Bell	45

Stephen Glover 46 – 58

Conduit Boxes (Malleable)	48 - 50
Extension Rings, Couplers and Bends (Malleable)	51 - 52
Covers, Nipples and Adaptors	53 - 54
Bushes, Locknuts and Lockrings	55 - 56
Saddles and Crampets	57
Adaptable Boxes	58
Stocks, Dies and Guides	58

Deta Terms and Conditions 59

Cable

Co-Axial Cable

Satellite Cable

Alarm Cable

Telephone Cable

Data Cable

Speaker Flex

Arctic Cable

Sheath Flex

Cable

Co-Axial Cable

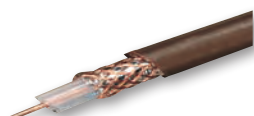
- 100m & 250m reels
- Low loss
- TV down lead & CCTV applications

530B 1/1.0mm conductor low-loss semi-air-spaced TV down lead, 100m reel 75Ω, brown

530W As above in white

533 RG59 CCTV co-axial cable, 100m reel 75Ω

533/250 RG59 CCTV co-axial cable 250m reel, black



530B



530W



533/250

Satellite Cable

- 100m & 250m reels
- High performance, low loss
- CAI approved version

532B RG6 1/1.0mm conductor low-loss semi-air-spaced satellite down lead, 100m reel 75Ω, black

532W As above in white

532B/250 RG6 1/1.0mm conductor low-loss semi-air-spaced satellite down lead 250m reel 75Ω, black



532B



534

534B DT100 co-axial cable 100m reel, for digital/satellite connection and high speed data transfer, black

534B/250 DT100 co-axial cable 250m reel, black

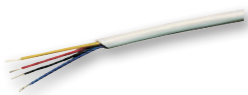
535B CAI Approved DT100 co-axial cable 100m reel, black

Cable

Alarm Cable

- 100m reel
- White or brown sheath

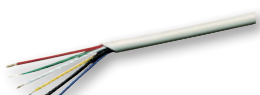
- 630W 4 core alarm cable
- Colour coded red, blue, yellow, black
- 630B As above in brown
- 631W 6 core alarm cable
- Colour coded red, blue, yellow, black, white, green
- 631B As above in brown
- 632W 8 core alarm cable
- Colour coded red, blue, yellow, black, white, green, orange, brown
- 632B As above in brown
- 633W 12 core alarm cable
- Colour coded red, blue, yellow, black, white, green, orange, brown, grey, purple, pink, turquoise
- 633B As above in brown



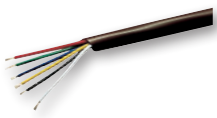
630/W



630/B



631/W



631/B



632/W



632/B



633/W

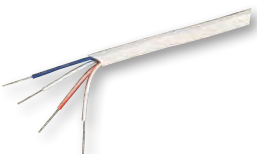


633/B

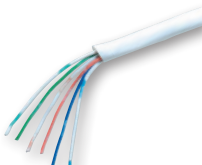
Telephone Cable

- 100m reels
- Complies with CW1308

- 1902/2 2 pair - white - CW1308
- 1902/3 3 pair - white - CW1308
- 1902/4 4 pair - white - CW1308
- 1902/6 6 pair - white - CW1308
- 1902/10 10 pair - white - CW1308



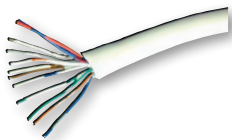
1902/2



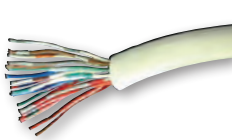
1902/3



1902/4



1902/6

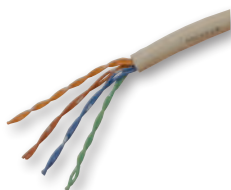


1902/10

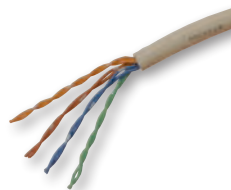
Data Cable

- 305m pull box
- In compliance with TIA/EIA 568-B
- Copper conductor

- 542 Cat 5e solid unshielded twisted pair
- 543 Cat 5e solid foil shielded twisted pair
- 544 Cat 5e solid unshielded twisted pair
- Low smoke, zero halogen (LSZH)
purple
- 550 Cat 6 solid unshielded twisted pair
- 551 Cat 6 solid unshielded twisted pair
- Low smoke, zero halogen (LSZH)
purple



542



550

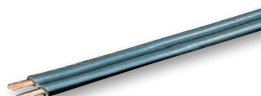
Speaker Flex/ Bell Wire

- 100m reels

- 219/WH Speaker flex, 7 strands - white
- 218/W Speaker flex, 13 strands - white
- 218/G Speaker flex, 13 strands - grey
- 215/W Speaker flex, 42 strands - white
- 214/W Speaker flex, 79 strands - white
- 218/X White bell wire



218/W



218/G



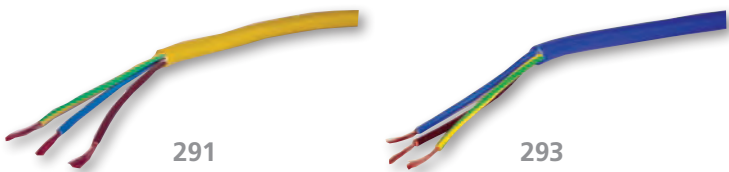
218/X

Cable

Arctic Cable

- In compliance with BS 7919
- 100m reels
- 3183AG

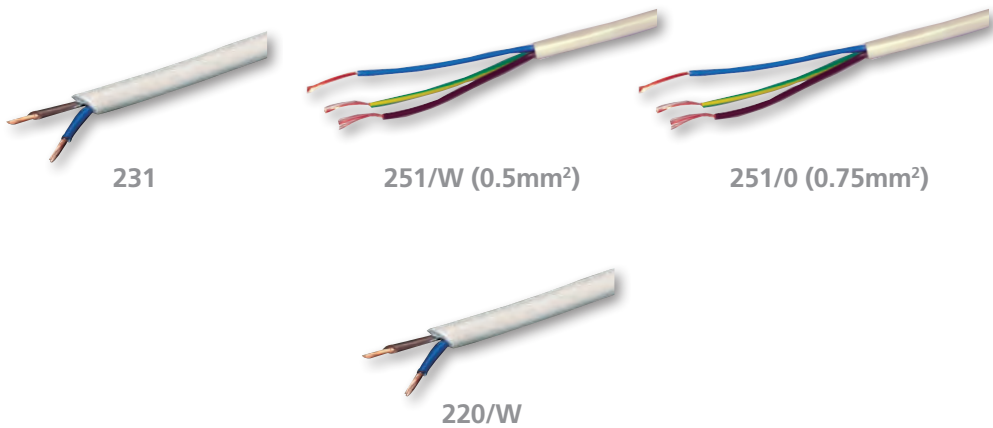
- 291 Yellow 1.5mm²
- 292 Yellow 2.5mm²
- 293 Blue 1.5mm²
- 294 Blue 2.5mm²



Sheath Flex

- In compliance with BS 6500
- 100m reels

- 2 CORE OVAL PVC
- 220/W 0.5mm² - 21924 - H03VVH 2-F, white
 - 220/B As above in black
- 2/3 CORE ROUND PVC
- 231 0.75mm² 2 core - 2182Y - H03VV-F
- 251/W 0.5mm² 3 core - 2183Y - H03VV-F, white
- 251/G As above in gold
- 251/0 0.75mm² 3 core - 2183Y - H03VV-F, white
- 251/9 As above in gold



Ventilation

Axial Fans

Centrifugal Fans

Low Voltage Fans

Shower Fans

Commercial Fans

Flexible Ducting

Fixing Kits

External Grilles

Hand Dryers

Ventilation

- DETA extractor fans are attractively styled to blend with modern environments
- Constructed from easy-to-clean, high-gloss ABS thermoplastic
- Designed to exceed the requirements of The Buildings Regulations Document F1: means of ventilation
- Fan motor protected by a thermal fuse
- Fans suitable for wall & ceiling mounting (except pullcord fan)
- In compliance with BS EN 60335-2-80
- 3-year guarantee

Axial Fan 100mm (4")

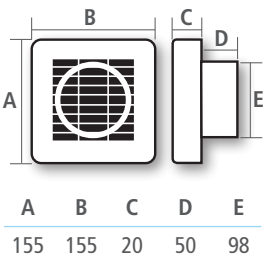
- Extraction rate 24 litres/second or 85m³/hour (see performance data table on Page 12)
- Suitable for window mounting using fixing kit, Cat No. 4823, or wall mounting using Cat No. 4824

- 4800 Standard
- 4801 Timer
- 4802 Pullcord (not suitable for ceiling mounting)
- 4803 Humidistat
- 4804 Automatic shutters and timer
- 4810 Automatic shutters and pull cord
- 4811 Automatic shutters, humidistat and pull cord



4800
4801

Fan Dimensions (mm)



Axial Fan - Slimline 100mm (4")

- Extraction rate 24 litres/second or 85m³/hour (see performance data table on Page 12)
- Cannot be window mounted

- 4870 Standard - white
- 4872 Standard - chrome
- 4871 Timer - white
- 4873 Timer - chrome

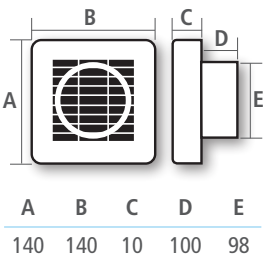


4870



4872

Fan Dimensions (mm)



Axial Fan 150mm (6")

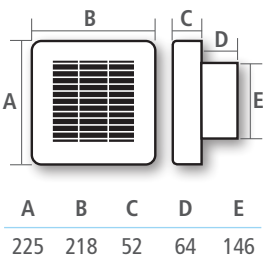
- Extraction rate 64 litres/second or 230m³/hour (see performance data table on Page 12)
- Suitable for window mounting using fixing kit, Cat No. 4883, or wall mounting using Cat No. 4884

- 4860 Standard
- 4861 Timer
- 4864 Automatic shutters and timer
- 4865 Automatic shutters and pull cord
- 4866 Automatic shutters, humidistat and pull cord



4860

Fan Dimensions (mm)



Centrifugal Fan 100mm (4")

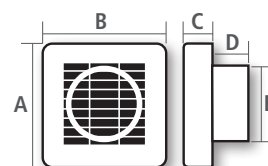
- Non-return flap to prevent back-draughts

- 4805 Timer
(Extraction rate 90m³/hour or
25 litres per second)
- 4807 Humidistat
(Extraction rate 90m³/hour or
25 litres per second)



4805 / 4807

Fan Dimensions (mm)



A	B	C	D	E
155	155	20	50	98

In Line Centrifugal Fan 100mm (4")

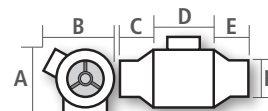
- Suitable for shower room, bathroom or toilet installations without external walls where long duct runs are required

- 4809 In-line and timer
(Extraction rate 110m³/hour or
31 litres per second)



4809

Fan Dimensions (mm)



A	B	C	D	E	F
195	195	65	128	65	98

Low Voltage Fans 100mm (4")

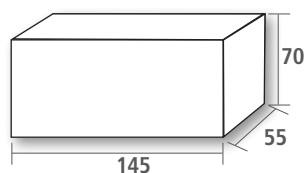
- Can be installed in splash area of shower or bath (zone 1)
- Extraction rate 24 litres/second or 85m³/hour (see performance data table on page 12)

- 4815 12V low voltage fan
- 4816 12V low voltage fan and timer
- 4817 12V low voltage fan humidistat and timer

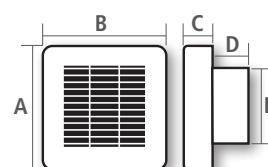


4815 / 4816

Transformer Dimensions (mm)



Fan Dimensions (mm)



A	B	C	D	E
140	140	10	100	98

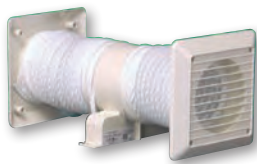
Ventilation

- In compliance with BS EN 60335-2-80
- 3-year guarantee

Shower Fans

- Extraction rate up to 23 litres/second or 85m³/hour (See performance data table below)
- Over-run time delay adjustable between 3 and 25 minutes (timer versions)
- 3m (extended) flexible ducting
- Internal/external fixed louvres grilles

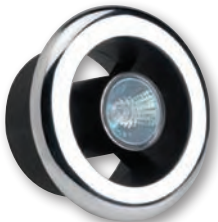
- 4840 Shower fan kit and timer
- 4841 Shower fan kit with timer and light - white and chrome cover supplied
- 4842 Shower fan kit



4840



4841



4841

Ventilation Fan Performance Data

	100mm Axial Fans	150mm Axial Fans	100mm Shower Fan Kits	100mm Cenrifugal Fans	100mm In-Line Centrifugal Fan
Duty at Free Discharge (m³/hr)	85	230	85	62	110
Supply Voltage at 50/60 Hz	240	240	240	240	240
Motor Power (Watts)	*16/25	*25/45	16	25	45
Sound Pressure Level at 3m dB	41	45	30	32	38
Insulation Class	□	□	□	□	□
IP Rating	IPX4	IPX4	IPX4	IPX4	IPX4
Maximum Running	40°C	40°C	40°C	40°C	40°C
Weight Kg	0.55	0.93	1.33	1.1	1.7

Commercial Fans

- Suitable for commercial applications in hotels, offices, restaurants, pubs etc.
- Remote variable reversible speed controller available Deta Cat No. 4902
- Wall-fixing kit available
- In compliance with BSEN 60335-2-80
- 3-year guarantee

Commercial Fans

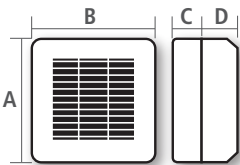
- Comes complete with external fixed louvre

- 4900 230mm (9") axial fan
- Automatic shutters
(extraction rate 500m³/hour or 140 litres/second)
- 4901 300mm (12") axial fan
- Automatic shutters
(extraction rate 900m³/hour or 250 litres/second)



4900

Fan Dimensions (mm)



Cat. No	A	B	C	D
4900	286	286	125	25
4901	362	362	145	25

Commercial Fan Controller

- Variable speed
- Reverses airflow direction
- Mounts on standard 25mm 1 gang surface or flush box

- 4902 Remote reversible controller (for use with commercial fans only)



4902

Commercial Fan Humidistat Control

- Converts standard fan to a humidity controlled fan
- Over run timer

- 4903 Humidistat control (for use with commercial fans only)



4903

Accessories

• 1-year guarantee

Flexible Ducting

- PVC reinforced with spirally-wound steel wire

4820	100mm (4") 3m length
4826	150mm (6") 45m length
4880	150mm (6") 3m length



4880

4820

Fixing Kits

- Fixed grilles - may be installed in horizontal or vertical planes and in exposed locations where gravity grilles may be affected by turbulent wind conditions
- Window kits - 2-part window kit with sealing gaskets and gravity grille
- For use in single or double-glazed windows up to 30mm thick

Window

4823	100mm (4")
4883	150mm (6")

Wall

4824	100mm (4")
4884	150mm (6")
4984	230mm (9")
4985	300mm (12")



4823



4824

External Grille

- Gravity grilles - to prevent back-draughts. These should not be installed in exposed locations

4821W	100mm (4") gravity grille - white
4821B	100mm (4") gravity grille - brown
4822W	100mm (4") fixed grille - white
4822B	100mm (4") fixed grille - brown
4881W	150mm (6") gravity grille - white
4881B	150mm (6") gravity grille - brown
4882W	150mm (6") fixed grille - white
4882B	150mm (6") fixed grille - brown



4821W



4881B

Hand Dryers

- High-quality, low-maintenance hand dryers for commercial applications
- Hygienic alternative to paper towels
- In compliance with BS EN 60335-2-23 & EN 55014
- 2-year guarantee

Hand Dryers

- Attractive ABS housing offers high resistance against fire, cigarette burns, water, sunlight and organic detergents
- Self re-setting overheat thermostat provides over-temperature protection should the hand dryer airflow be deliberately blocked
- Each dryer includes a wall fixing template for easy and rapid installation
- Rated IP X1
- Anti-tamper cover (fixing screws included)

- 1005 1.9kW compact
- Push button
- For light use in shops, offices, public houses etc.
- Provides 45 seconds drying time
- 1006 1.9kW compact
- Automatic
- For use in clinics, restaurants, kitchens, etc where high levels of hygiene are required



1005



1006

Heavy Duty Hand Dryers

- For heavy duty applications in public lavatories, factories, sports establishments schools etc (anti-tamper cover, fixing screws included)
- Durable, vandal-resistant steel casing with tamper-proof fixings, 2mm thick glazed white enamel coating
- Chrome-plated discharge nozzle may be swivelled for hand or face drying
- 3-year guarantee

Heavy Duty Hand Dryers

- Self re-setting overheat thermostat provides over-temperature protection should the hand dryer airflow be deliberately blocked
- Tamper-proof screws included

- 1007 2.4kW push button
- Provides 45 seconds drying time
- 1008 2.4kW automatic



1007



1008

Heavy Duty Hand Dryers

• 3-year guarantee

Chrome Hand Dryers

- 2.0kW heater element 200W fan
- Plated steel cover
- Choice of finishes: chrome or satin chrome

- 1009CH 2.2kW chrome
- Automatic
- 1009SC 2.2kW satin chrome
- Automatic



1009CH



1009SC

Hand Dryer Specification

	1005/1006	1007/1008	1009CH/1009SC
Dimensions	220 x 268 x 170mm	248 x 284 x 202mm	220 x 300 x 175mm
Voltage	240V ac 50Hz	240V ac 50Hz	230V ac 50Hz
Heater Element	1.8kW	2.2kW	2.0kW
Motor	100W	200W	200W
Weight	3.8Kg	7Kg	6.1Kg
Effective Airflow	255m³/hour	345m³/hour	362m³/hour
Temperature	Ambient +27°C	Ambient +33°C	Ambient +30°C
Air Speed	59.4Km/hour	101Km/hour	73.8Km/hour
Noise Level	64dB	70dB	68dB
Power Consumption	8 Amps	10 Amps	9.5 Amps

Safety Alarms

230 Volt AC Smoke Alarms

9 Volt DC Smoke Alarms

Bases

Carbon Monoxide Alarms

SLA Batteries

Smoke / Heat Alarms

230 Volt AC Battery back up

- Low battery warning
- Interconnectable - up to 12 units
- LED operating indicators
- Tamper-proof mounting base
- Removable dust cover
- Conforms to BS EN 14604:2005 (1113 conforms to BS EN 5446-2:2003 as applicable)
- 5-year guarantee

- 1111 230V AC IONISATION smoke alarm
1113 230V AC OPTICAL smoke alarm
1115 230V AC HEAT alarm



1111



1113



1115

9 Volt DC

- Alarm pause and test
- Low battery warning
- Interconnectable up to 12 units (on 1103)
- LED operating indicators
- Conforms to BS EN 14604:2005

- 1101 9V DC IONISATION alarm
- 9V battery included
- 5-year guarantee
1103 9V DC IONISATION alarm
- Sealed in long life lithium battery
- Interconnectable up to 12 units
- 10-year guarantee



1101



1103

Accessories

- 1110 230V ceiling pattress
- Provides 4-way terminal block for easy connection of smoke and heat alarms
- Mini trunking entry



1110

Alarm Specification

	1111	1113	1115	1101	1103
Sensor Type	ION	OPT	Heat	ION	ION
Power Supply	230V	230V	230V	9V Alkaline Battery	9V Lithium Battery
Battery Back-up	9V Alkaline Battery	9V Alkaline Battery	9V Alkaline Battery	-	-
Low Battery Warning	✓	✓	✓	✓	✓
Missing Battery Indicator	✓	✓	✓	-	-
Test Button	✓	✓	✓	✓	✓
Silencer	✓	✓	✓	✓	✓
Green Power LED	✓	✓	✓	✓	✓
Number Interconnectable	12	12	12	-	12
Max. Power Consumption	9W	9W	9W	-	-
Sound Output	85dB at 3 metres	85dB at 3 metres	85dB at 3 metres	85dB at 3 metres	85dB at 3 metres
Protective Dust Cover	✓	✓	✓	-	-
Guarantee	5 Years	5 Years	5 Years	5 Years	10 Years

Indicating LED's

All mains powered alarms are fitted with a green LED which indicates that the mains supply is connected to the alarm.

All alarms (mains powered and battery) are fitted with a red LED which flashes approximately every 45 seconds and indicates the alarm is operating.

Tamper Proof Mounting

The alarms are supplied with a mounting base which includes a tamper-proof 'key', preventing unauthorised removal of the alarm.

Protective Dust Cover

Mains voltage alarms are supplied with dust covers to protect them from dust and paint in new installations.

Carbon Monoxide Alarms

- Electrochemical sensing alarm
- Test/reset button
- Low battery warning
- LED operating indicators
- In compliance with BS EN 50291:2001

Carbon Monoxide Alarm 230 Volt AC

- Interlinkable up to 12 CO alarms
- Alarm source indicator
- Push fit connector
- Mounting base plate
- 5-year guarantee

1121 230V AC carbon monoxide alarm



1121

Carbon Monoxide Alarm Battery Powered

- Test/silence button
- Low battery warning
- LED operating indicators
- Long life 7-year sensor and sealed for life battery
- 7-year guarantee

1125 Battery powered carbon monoxide alarm

1126 Tamper-proof base for 1125
- Anti-tamper base prevents alarm from unauthorised removal
- Pull-up information card



1125



1126

Potential sources of CO

Carbon monoxide is an odourless, tasteless and colourless poisonous gas, which can kill if too much builds up in an enclosed area.

Carbon monoxide occurs where combustion of fossil fuels, such as oil gas or wood, is incomplete. In the normal combustion process, carbon in the fossil fuels combine with oxygen to produce CO₂. However, if there is a lack of air for the combustion process, or if a heating appliance is faulty, carbon monoxide can be produced.

Potential sources of CO in the home are boilers, water heaters, cookers, fireplaces and blocked chimneys and attached garages.

Signs of carbon monoxide include a yellow or orange flame which should be blue, staining, sooting or discolouration around an appliance and a strange smell when an appliance is switched on.

Carbon monoxide (CO) is measured in parts per million (ppm) and these alarms will alert you to its presence.

Alarms should be placed in the same room as the fuel-burning appliance and in any room that has a flue running through it.

SLA Batteries

Sealed Lead Acid Alarm Batteries 12V

- 3-year guarantee

- AB12 1.2Ah
- AB22 2.2Ah
- AB30 3.0Ah
- AB70 7.0Ah



Leak Proof Design

The DETA Sealed Lead-Acid (SLA) uses an absorbed electrolyte system whereby all electrolyte is absorbed into the positive and negative plates. The units utilise a special construction and sealing wax technique to ensure that no electrolyte leakage occurs from the terminal. Hence, the SLA battery can be operated in any orientation without loss of capacity, electrolyte or service life.

Electrolyte Suspension System

An electrolyte suspension system consisting of a glass fibre separator material is employed in the battery. This suspension system helps to obtain maximum service life by fully retaining the electrolyte and preventing its escape from the separator material.

Low Pressure Venting System

Each battery is equipped with a safe, low-pressure venting system, which is designed to release excess gas and reseal automatically in the event of the internal gas pressure rising to an unacceptable level.

Long Service Life

DETA SLA batteries have a long life, both in cycle and float service. For cycle service life, a large number of recharge cycles can be expected with average depth of discharge. If the battery is operated strictly within specification, several years can be expected for float service life.

Maintenance Free Operation

There is no need to check the specific gravity of the electrolyte or to add water during the service life.

Heavy Duty Grids

The heavy duty lead calcium alloy grid provides an extra margin of performance in both float and cycle operations, even in conditions of deep discharge.

High Recovery Capacity

The SLA battery has excellent charge acceptance and recovery capability, even after very deep discharge.

Cat No.	AB12	AB22	AB30	AB70
Dimensions (mm)				
Length	97	178	134	151
Width	45	35	67	65
Height	53	61	61	95
Terminal Height (mm)	6	6	6	6
Weight (Kg)	0.57	0.94	1.28	2.60
Maximum Charging Current	0.36A	0.66A	0.90A	2.1A
Internal Resistance	<100mΩ	<90mΩ	<50mΩ	<23mΩ
Cyclic Use	14.4 to 15V 30mV/°C	14.4 to 15V 30mV/°C	14.4 to 15V 30mV/°C	14.4 to 15V 30mV/°C
Standby Use	13.5 to 13.8V 20mV/°C	13.5 to 13.8V 20mV/°C	13.5 to 13.8V 20mV/°C	13.5 to 13.8V 20mV/°C
Maximum Discharge for 5 seconds	18A	33A	50A	105A

Lighting

Fire Rated Downlights
LED Fire Rated Downlights
Transformers
Stand Alone PIR Detectors
Photocells
Floodlights
LED Floodlights
Bulkheads
Low Energy Surface Luminaire
LED Surface Luminaire
Outdoor Lanterns

FIRE RATED DOWNLIGHTS

Why Fire Rated Downlights must be used

In accordance with Building Regulations Approved Document B (Fire Safety), it is necessary that to inhibit the spread of fire within the building, the internal linings shall adequately resist the spread of flames over the surface.

When fitted, recessed downlights effectively become part of the internal lining so they must not affect the fire resistance of the ceiling.

The following premises are required to conform to the building regulations and depending on the type of building constructed, the ceilings (and fittings) must be fire rated to either 30, 60 or 90 minutes.

- Residential Housing
- Flats
- Care Homes
- Hospitals
- Schools/Colleges/Universities
- Shops/Commercial Properties
- Recreational Buildings



Within domestic dwellings, ceilings usually need to have a 30-minute fire rating - although larger establishments may need to have ceilings which have fire ratings of either 60 or 90 minutes.

When installing **DETA'S** Fire Rated Downlights, you allow the building construction to comply with Part B - Fire safety of the Buildings Regulations, whether a 30, 60 or 90-minute fire barrier is required.

DETA'S Fire Rated Downlights have seals preventing air movement through the light fitting, which help reduce condensation building up. These seals also help reduce airborne and impact sounds, allowing the building to comply with Building Regulation Part E - Resistance to the Passage of Sound.

Within **DETA'S** range of Fire Rated Downlights are dedicated low energy fittings, in both fixed and IP65 shower versions. These fittings come complete with 11W compact fluorescent lamps and allow installations to comply with Part L of the Building Regulations - Conservation of Fuel and Power, and Control of Condensation.

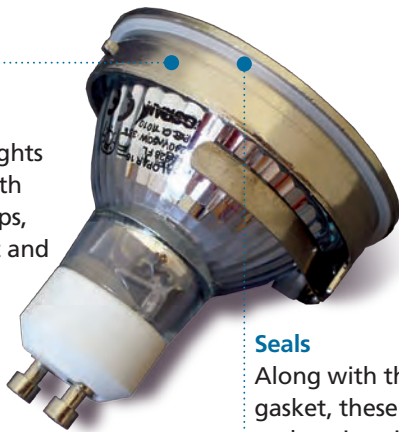
All in all, **DETA'S** new fire rated downlights allow the installation to comply with the latest versions of the Building Regulations, and with fittings available in fixed, tilt and IP65 shower versions, in three finishes of white, chrome and satin chrome, all installations will look stylish whilst still functional.

All of **DETA'S** Fire Rated Downlights are supplied with lamps so installation could not be easier.

PRODUCT FEATURES

Lamps

Mains and low voltage downlights are supplied with aluminised lamps, projecting light and heat forward. Low energy fittings are supplied with 11W CFL lamps



Seals

Along with the gasket, these seals assist with preventing the movement of air

Intumescent Material

Intumescent material is incorporated into vents to seal the ceiling in the event of a fire (fixed and tilt fittings)



Detachable Terminal Bracket

Allows the overall packaging to be smaller and reduces the impact on the environment (mains and low energy fittings)

Gasket

The gasket also provides a seal, preventing movement of air, allowing compliance with BS 5250 Control of Condensation, as well as allowing compliance with Part E of the Building Regulations (Passage of sound)



Ceramic Spacer

This acts as a heat barrier between the light fitting body and the terminal block, preventing it from overheating (mains voltage fixed and tilt fittings)

Lamp Ring

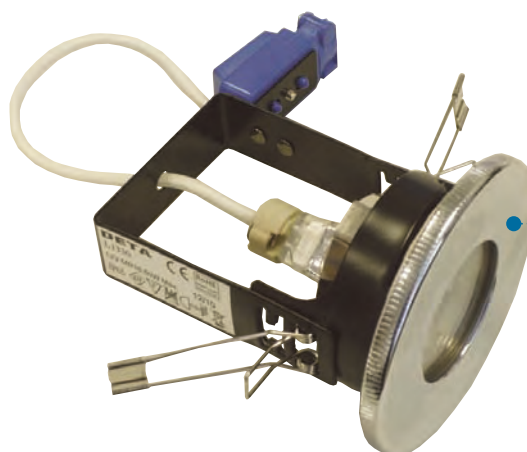
Twist and lock style

Air Vents

Large air vents maximise airflow allowing the light fittings to dissipate heat and reducing heat build up. This helps to increase lamp life

Mounting Springs

These can be fixed in either the upper or the lower position to allow installation into either single or double thickness plasterboard



IP65 Fittings

Bezel twists securely onto the fitting. The bezel also provides the fire rating by using heat-resistant glass

Mains Voltage Fire Rated Downlights



Mains Voltage Lighting:

- Supplied complete with an Osram GU10 50W aluminium reflector (heat forward) lamp
- Mounting springs adjustable for single and double thickness plaster board
- Twist and lock lampholder ring
- GU10 lampholder
- Available in white, chrome and satin chrome finishes
- 3-way terminal block for easy termination of T&E cable
- 2-year guarantee

- L1340WH Fixed - White
- L1340CH Fixed - Chrome
- L1340SC Fixed - Satin Chrome



L1340WH



L1340CH



L1340SC

- L1341WH Tilt - White
- L1341CH Tilt - Chrome
- L1341SC Tilt - Satin Chrome



L1341WH



L1341CH

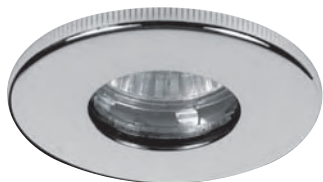


L1341SC

- L1360WH IP65 - White
- L1360CH IP65 - Chrome
- L1360SC IP65 - Satin Chrome



L1360WH



L1360CH



L1360SC

Installation Information

	Cut out Ø	Min. Void Depth
Fixed Downlight	71mm	110mm
Tilt Downlight	78mm	110mm
IP65 Downlight	72mm	130mm

Class II F Marked

LED Low Energy Fire Rated Downlights



LED Low Energy Lighting

- Supplied complete with a LED lamp
- GU10 4.5W 5000k Cool White LED Lamp
- Mounting springs adjustable for single and double thickness plaster board
- Twist and lock lampholder ring
- Available in white, chrome and satin chrome finishes
- 3-way terminal block for easy termination of T&E cables
- 2-year guarantee on fittings

- L1470WH Fixed - White
- L1470CH Fixed - Chrome
- L1470SC Fixed - Satin Chrome



L1470WH



L1470CH



L1470SC

- L1480WH IP65 - White
- L1480CH IP65 - Chrome
- L1480SC IP65 - Satin Chrome



L1480WH



L1480CH



L1480SC

Installation
Information

	Cut out Ø	Min. Void Depth
Fixed Downlight	71mm	110mm
IP65 Downlight	72mm	130mm

Class III F Marked

LED Lamp


- GU10 4.5W LED Lamp
- Cool White 5000k
- 283 lumens
- 76.6L/W

- L3901 4.5W LED lamp - Cool White



L3901

Low Energy Fire Rated Downlights



Low Energy Lighting:

- Supplied complete with an 11W CFL lamp
- Mounting springs adjustable for single and double thickness plaster board
- Twist and lock lampholder ring
- Available in white, chrome and satin chrome finishes
- 3-way terminal block for easy termination of T&E cable
- 2-year guarantee

- L1370WH Fixed - White
- L1370CH Fixed - Chrome
- L1370SC Fixed - Satin Chrome



L1370WH

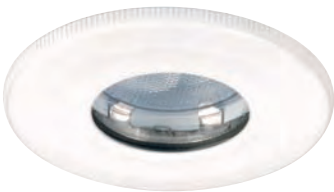


L1370CH

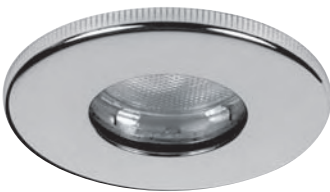


L1370SC

- L1380WH IP65 - White
- L1380CH IP65 - Chrome
- L1380SC IP65 - Satin Chrome



L1380WH



L1380CH



L1380SC

Installation Information

	Cut out Ø	Min. Void Depth
Fixed Downlight	71mm	150mm
IP65 Downlight	72mm	150mm

Low Voltage Fire Rated Downlights



Low Voltage Lighting:

- Supplied complete with an Osram MR16 50W aluminium reflector (heat forward) lamp
- Mounting springs adjustable for single and double thickness plaster board
- Twist and lock lampholder ring
- Available in white, chrome and satin chrome finishes
- 2-year guarantee

- L1320WH Fixed - White
L1320CH Fixed - Chrome
L1320SC Fixed - Satin Chrome



L1320WH



L1320CH



L1320SC

- L1321WH Tilt - White
L1321CH Tilt - Chrome
L1321SC Tilt - Satin Chrome



L1321WH



L1321CH



L1321SC

- L1330WH IP65 - White
L1330CH IP65 - Chrome
L1330SC IP65 - Satin Chrome



L1330WH



L1330CH



L1330SC

Installation Information

	Cut out Ø	Min. Void Depth
Fixed Downlight	71mm	110mm
Tilt Downlight	78mm	110mm
IP65 Downlight	72mm	130mm

Class III F Marked

Low Voltage Lighting Transformers

- Short circuit protection - safety cutout if output leads are shorted
- Overload protection - safety cutout if the load is above rated load
- Soft start - prolongs lamp life

Electronic Transformer

- Dimmable with most resistive and inductive dimmers
- Supplied with 250mm input and output cables
- Case shaped for through hole or surface mount installation
- 5-year guarantee

LTS60 60VA Transformer
- One shot



LTS60

Electronic Transformer

- Dimmable with most resistive and inductive dimmers
- Supplied with 250mm input and output cables (LTR60)
- Case shaped for through hole or surface mount installation
- Resettable thermal, short circuit & overload protection
- 5-year guarantee

LTR60 60VA Transformer
- Resettable

LTR105 105VA Transformer
- Resettable



LTR60



LTR105

	LTS60	LTR60	LTR105
Supply Voltage	240V ac 50Hz	240V ac 50Hz	240V ac 50Hz
Output Voltage	11.6V ac	11.6V ac	11.6V ac
Rated Load	20-60W	20-60W	20-50W
Input Connection	250 x 0.75mm ² Flex Cable	250 x 0.75mm ² Flex Cable	Screw Terminals
Output Connection	Single core PVC heat resistant flexible cable 0.75mm ²		Screw Terminals
Output Cable (max length)	2m	2m	2m
Dimmers	Most resistive & inductive types	Most resistive & inductive types	Most resistive & inductive types
Thermal Protection	Cuts out if overheats	Auto resets after the transformer has cooled down	Auto resets after the transformer has cooled down
Short Circuit Protection	Auto resets after the fault condition has been removed		
Overload Protection	Auto resets when the load has been changed to within limits of the transformer		
Surge Protection	0.5kV	1kV	1kV
Temp Range (ambient)	-20°C to +45°C	-20°C to +50°C	-20°C to +50°C
Dimensions	127 x 33 x 27mm	127 x 33 x 27mm	175 x 39 x 42mm
Standards	EN 61347-1:2001, EN 61347-2-2:2001		
Standards (EMC)	EN 55015:2000+A1, EN 61547:1995+A1, EN 61000-3-2:2000, EN61000-3-3:1995+A1		

Lighting Control

- In compliance with EN 60669-2-1
- Recommended unit mounting height 1.8m - 2.5m approx.
- Suitable for wall or ceiling mounting
- Adjustable timer 5 sec - 12 min
- Built-in sensor prevents daytime operation
- Rated IP44
- 2-year guarantee

Stand Alone PIR Detectors

- Detection Range 180° at 12m
- Auto off/manual over-ride switching function
- Maximum lighting load 1100W (incandescent) or 500W (fluorescent)

L2309W 1100W adjustable 180° PIR
- white

L2309B 1100W adjustable 180° PIR
- black



L2309W



L2309B

Stand Alone PIR Detectors

- Detection Range 120° only at 14m
- Auto off switching function
- Maximum lighting load 2200W (incandescent) or 500W (fluorescent)

L2310W 2200W adjustable 180° PIR
- white

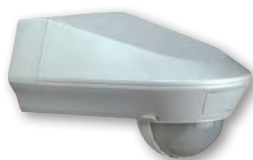


L2310W

Stand Alone PIR Detectors

- Detection Range 240° up to 16m
- Auto off/manual over-ride switching function
- Maximum lighting load 2000W (incandescent) or 500W (fluorescent)

L2311W 2000W corner or wall mounted
240° PIR
- white



L2311W

Photocells

- Available as head only or in kit form
- Compatible NEMA socket
- In compliance with EN 50081-1 and EN 50082-1
- 70 lux switching
- 1-year guarantee

Electronic Photocells

- 5A load switching capacity
- IP65 rated

JPZ30507 Cell head
JPZ3061 Cell kit
JPZ30527 Cell head
JPZ3063 Cell kit

- Surge protection
- 15 second switching delay
- <0.5W power consumption



JPZ30507

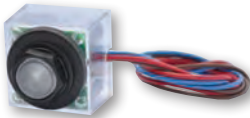


JPZ3063

Miniature Photocells

- Detector mounts in 20mm diameter knockout
- 2 x 250W SON load switching
- 5A load switching capacity
- IP65 rated

JHL4M
JHL4MREM - Remote photocell on 40cm lead



JHL4M



JHL4MREM

Cat No.		JPZ30507 JPZ3061	JPZ30527 JPZ3063	JHL4M JHL4MREM
Photocell type		Electronic	Electronic	Electronic
Operating voltage		230VAC 50Hz	230VAC 50Hz	230VAC 50Hz
Switch on lux level		70	70	70
Typical load (H.P.S)		2 x 250W	2 x 250W	2 x 250W SON
Load-switching capacity		5 amps	5 amps	5 amps
Switching time delay		60 seconds	60 seconds	30 seconds
Operating temperature		-20°C to 55°C	-20°C to 70°C	-20°C to 70°C
Power consumption	Light (Standby)	3 Watts	3 Watts	0.35 Watts
	Dark (Operation)	0 Watts	0.5 Watts	Negligible
Enclosure material		Polycarbonate	Polycarbonate	Polycarbonate

Exterior Lighting

- In compliance with EN 60598-2-1
- 1-year guarantee

Floodlights

- In compliance with EN60598-2-1
- IP44 rated
- Lamp supplied

- L2300W 500W - white
 L2300B 500W - black
 - Rated IP44
 - 400W class C lamp supplied
- L2304W 150W mini- white
 L2304B 150W mini- black
 - Rated IP44
 - 120W class C lamp supplied



L2300B



L2304W



L2304B

PIR Floodlights

- Recommended unit mounting height 1.8m - 2.5m. These units are suitable for wall mounting only
- Adjustable timer 5 sec - 12 min
- Auto off/manual over-ride switching function
- Built-in sensor prevents daytime operation
- IP44 rated
- Lamp supplied

- L2301W 500W PIR floodlight - white
 L2301B 500W PIR floodlight - black
 - Detection range up to 12m x 200°
 - Maximum detector lighting load 500W
 - 400W class C lamp supplied
- L2302W 150W PIR floodlight - white
 L2302B 150W PIR floodlight - black
 - Detection range up to 12m x 110°
 - Maximum detector lighting load 250W
 - 120W class C lamp supplied



L2301W



L2302W



L2302B

LED Floodlights

- Energy efficient replacement for tungsten halogen floodlights
- Complete with integral driver and 1m flex
- Die-cast aluminium housing
- 1-year guarantee

- L2332 10W - cool white
 L2336 30W - cool white



L2332



L2336

Exterior Lighting

- In compliance with EN 60598
- 2-year guarantee

B22 Bulkhead

- Available with white or black base
- Robust polycarbonate construction for wall or ceiling mounting
- Opal cover
- BC lampholder, lamp not supplied
- Diameter 225mm
- IP44 rated
- 2-year guarantee

- 7049W 100W (GLS) circular luminaire
- White
- 7049B 100W (GLS) circular luminaire
- Black



7049W



7049B

CFL 16W Bulkhead

- All products complete with CFL Lamp & high-frequency electronic ballast
- Rated IP65

- 7042WH 16W CFL round bulkhead
- Opal diffuser
- White base
- 7042BK As above with black base
- 7043WH 16W CFL round bulkhead
- Prismatic diffuser
- White base
- 7043BK As above with black base



7042BK



7043WH

CFL 28W Bulkhead

- All products complete with CFL Lamp & high-frequency electronic ballast
- Rated IP65

- 7044WH 28W CFL round bulkhead
- Opal diffuser
- White base
- 7044BK As above with black base
- 7045WH 28W CFL round bulkhead
- Prismatic diffuser
- White base
- 7045BK As above with black base
- 7047 28W CFL emergency gear tray
- Spare



7044WH



7044BK

PIR Bulkhead

- Recommended unit mounting height 1.8m - 2.5m
- Detection range 10m x 110°
- Adjustable timer 5 sec - 12 min approx.
- Auto off/manual over-ride switching function
- Built-in adjustable sensor prevents daytime operation
- Maximum detector lighting load 500W
- Rated IP44
- Cable channels moulded into rear casing
- Access to switched live connection for alternative switched manual over-ride
- Black body with prismatic diffuser
- BC lampholder, lamp not supplied

305 60W (GLS) bulkhead with integral 110° PIR detector



305

Twin Spotlights

- Detection range 15m x 180°
- Adjustable timer 5 sec - 12 min
- Auto off/manual over-ride switching function
- Built-in sensor prevents daytime operation
- Maximum detector lighting load 2 x 150W
- IP44 rated
- Lamps not supplied

L2303W 2 x 150W (PAR38) with adjustable 180° PIR detector - white

L2303B 2 x 150W (PAR38) with adjustable 180° PIR detector - black



L2303W



L2303B

Low Energy Surface Luminaire

- Chrome Bezel, opal diffuser
- 28W CFL 2D lamp or 13W LED version
- IP44 rated
- Indoor use only

7044CH 28W CFL Surface luminaire - 2-year guarantee

L1055CH LED Surface luminaire - 1-year guarantee



7044CH



L1055CH

Outdoor Lanterns

Half Lantern

- In compliance with EN60598-1
- Maximum lighting load 100W
- ES lamp fitting
- 2-year guarantee

- L2844W Traditional cast aluminium half lantern - white
- L2844B Traditional cast aluminium half lantern - black
- L2845W Traditional cast aluminium half lantern with PIR - white
- L2845B Traditional cast aluminium half lantern with PIR - black



L2845W



L2845B

Lanterns

- In compliance with EN60598-1
- Maximum lighting load 60W
- ES lamp fitting
- Attractive bevelled glass panels
- Suitable for use with low energy lamps
- 2-year guarantee

- L2840W Traditional 4 panel cast aluminium lantern - white
- L2840B Traditional 4 panel cast aluminium lantern - black
- L2842W Traditional 6 panel cast aluminium lantern - white
- L2842B Traditional 6 panel cast aluminium lantern - black



L2840W



L2842W

PIR Lanterns

- In compliance with EN60598-1
- Maximum lighting load 60W
- ES lamp fitting
- PIR detector range up to 8m x 110° adjustable
- Detection range 15m x 180°
- Adjustable 'on' timer 5 sec - 5 min approx
- Adjustable dusk-to-dawn sensor
- 2-year guarantee

- L2841W Traditional 4 panel cast aluminium lantern with PIR detector - white
- L2841B Traditional 4 panel cast aluminium lantern with PIR detector - black
- L2843W Traditional 6 panel cast aluminium lantern with PIR detector - white
- L2843B Traditional 6 panel cast aluminium lantern with PIR detector - black



L2841B



L2843W



L2843B

Commodities

Metal Boxes

Dry Lining Boxes

Junction Boxes

Connector Boxes

Earthing Box

Strip Connectors

PVC Tape

Flex Connectors

Plugs

Extension Leads

Trailing Sockets

Adaptors

Bell Transformers

Fuse Links

Accessories

Door Bell

Boxes

Metal Boxes

- In compliance with BS 4662
- Galvanised steel 20mm knockout box (except DB152 & DB169)
- 35mm & 46mm deep boxes have 20mm and 25mm knockouts
- Brass earth terminal
- Adjustable lug

- DB152 1 gang 16mm deep
- Oval entry
- DB162 1 gang 25mm deep
- DB163 2 gang 25mm deep
- DB164 1 gang 35mm deep
- DB165 2 gang 35mm deep
- DB166 Dual 35mm deep
- For two 1 gang accessories
- DB167 1 gang 46mm deep
- DB168 2 gang 46mm deep
- DB169 1 gang architrave 27mm deep
- fixed lugs
- 16mm knockouts
- DB170 2 + 1 gang 35mm deep
- SP0001CH Longer length fixing screws
- 50mm



DB152



DB164



SP0001CH



DB163



DB166



DB170

Dry Lining Boxes

- In compliance with BS 5733
- ABS dry lining box with adjustable lugs
- Suitable for plaster board thickness of 4-20mm

- DB2540 1 gang 35mm deep
- DB2541 2 gang 35mm deep
- DB2545 Dual 35mm deep
- For two 1 gang accessories
- DB2542 1 gang 46mm deep
- DB2543 2 gang 46mm deep
- DB2544 Round box 34mm deep, 62mm diameter (excluding lip) including 'dual knock out' feature
- For use with round ceiling accessories and smoke alarms
- DB2546 2 + 1 gang 35mm deep
- DB2547 1 gang 35mm deep
- Unique design allows flush fitting of Deta Flatplate products
- DB2548 2 gang 35mm deep
- Unique design allows flush fitting of Deta Flatplate products



DB2545



DB2542



DB2543



DB2544



DB2546



DB2547



DB2548

Junction Boxes

Junction Boxes Standard

- In compliance with BS 6220
- Standard junction box diameter is 58mm
- 10-year guarantee

- 1500 5A, 4 terminal - white
- Selective entry
- 1504W 20A, 4 terminal - white
- 1504B 20A, 4 terminal - black



1500



1504W



1504B

Junction Boxes Heavy Duty

- Large brass terminals for easy access and greater cable capacity
- Additional cable breakout gives outer cable entry depth of up to 15mm
- Thicker base and cover for heavy duty use
- Selective cable entry
- 4 terminal version 71mm diameter
- 6 and 3 terminal version 90mm diameter
- 10-year guarantee

- 1502/HD 30A, 3 terminal - white
- 1502/BK 30A, 3 terminal - black
- 1501/HD 20A, 4 terminal - white
- 1501/BK 20A, 4 terminal - black
- 1503/HD 20A, 6 terminal - white
- 1503/BK 20A, 6 terminal - black



1502/HD



1501/HD



1503/HD



1502/BK



1501/BK



1503/BK

Commodities

Connector Boxes

- Suitable for cable sizes up to 1.5mm²
- 1210 for use with a 5A & 15A connector strip (Cat No. 1202P &1203P respectively)
- Lid fixing screw supplied

- 1210 Connector box 16A
- Complete with flex cord grip
- 1212 Connector box 16A
- Complete with connector strip and cord grip



1210



1212

Earthing Box

- 1220 Earthing box



1220

Strip Connectors

- 1201/P 3A
- 1202/P 5A
- 1203/P 15A
- 1204/P 30A
- 1205/P 60A



1201/P



1202/P



1203/P



1204/P



1205/P

PVC Tape

- In compliance with BS 3924
- Supplied cellophane wrapped on cardboard reels in sleeves of 10
- 19mm wide

33m length

- 383BK black
- 383WH white
- 383YE yellow
- 383RD red
- 383BU blue
- 383GY green/yellow
- 383BR brown
- 383GRY grey

20m length

- 382BK black
- 382WH white
- 382YE yellow
- 382RD red
- 382BU blue
- 382GY green/yellow
- 382BR brown
- 382GRY grey



383



382

Flex Connectors

- In compliance with BS 5733

- 793/10 10A 2 pin male / female connector
- 794/10 10A 3 pin male / female connector
- 795 5A 2 terminal through connector
- 796 13A 3 terminal through connector



793



794



795



796

Plugs

Standard Plugs

- In compliance with BS 1363
- NEMKO licensed
- Screwless cord grip

188G1W	13A plug, fused at 13A - white
188G1B	13A plug, fused at 13A - black
188G3W	13A plug, fused at 3A - white
188G3B	13A plug, fused at 3A - black
188G5W	13A plug, fused at 5A - white
188G5B	13A plug, fused at 5A - black



188G1W / 188G3W



188G1B / 188G3B

Tough Plug

- In compliance with BS 1363/A
- NEMKO licensed
- Screwless cord grip
- Made from nylon

188R1W	13A resilient plug, fused at 13A - white
188R1B	13A resilient plug, fused at 13A - black
188R3W	13A resilient plug, fused at 3A - white
188R3B	13A resilient plug, fused at 3A - black



188R1W / 188R3W



188R1B / 188R3B

Round Pin Plug

- In compliance with BS 546
- Unfused plug

185	2A round pin plug, unfused
187	5A round pin plug, unfused
189	15A round pin plug, unfused



185



187



189

Extension Leads

Extension Leads

- In compliance with BS 1363-2
- Shuttered socket outlets with flex and grip

- C3801 Twin 13A unfused extension socket, white with 2m of flex
- 2m x 1.25mm² 3 core flex
- C3812 4-way 13A unfused multi-socket, white with 1m of flex
- 1m x 1.25mm² 3 core flex
- Neon indicator
- C3813 4-way 13A unfused multi-socket, white with 2m of flex
- 2m x 1.25mm² 3 core flex
- Neon indicator
- C3814 4-way 13A unfused multi-socket, white with 3m of flex
- 3m x 1.25mm² 3 core flex
- Neon indicator



C3801



C3812



C3813



C3814

Trailing Sockets

- In compliance with BS 1363/A
- Rough service shuttered socket outlets
- 4-way multi-sockets have wall mounting facility

- 191RSW Single 13A rubber extension socket
- White
- 191RSB Single 13A rubber extension socket
- Black
- 191RTW Twin 13A rubber extension socket
- White
- 191RTB Twin 13A rubber extension socket
- Black
- C3701 Twin 13A nylon extension socket
- C3711 4-way 13A fused nylon multi-socket
- 13A fuse to BS 1362
- Neon indicator
- C3712 4-way 13A unfused nylon multi-socket
- 13A fuse to BS 1362
- Neon Indicator
- White
- C3712BK 4-way 13A unfused nylon multi-socket
- 13A fuse to BS 1362
- Neon Indicator
- Black



191RSW



191RSB



191RTW



191RTB



C3701



C3711



C3712



C3711

Commodities

Adaptors

- In compliance with BS 1363-3 where applicable
- Earth-pin-operated shuttered socket outlets

- 84 13A unfused 2-way adaptor
- 84F 13A fused 2-way adaptor
- 13A fuse to BS 1362
- 85F 13A fused 3-way adaptor
- 13A fuse to BS 1362
- 87F 1A fused shaver socket
- ASTA licensed
- 1A fuse to BS 646
- 82 13A plug to continental socket adaptor
- Converts CEE7 (16A) 2-pin plug to BS 1363 13A plug
- 81 Continental plug to UK 13A socket adaptor
- Strictly not for UK use
- Converts BS 1363 to CEE7 (10/16A) 2-pin plug with earth
- Maximum load 5A
- 78 B22 lamp cap to ES lampholder adaptor



84



85/F



87/F



82



81



78

Bell Transformers

- In compliance with EN 60742
- Double insulated

- 911 Heavy-duty transformer
12 Volt
1.5 Amp
Dimensions h:110 x w:53 x d:60mm
- 913 Light-duty transformer
8 Volt
1 Amp
Dimensions h:110 x w:36 x d:65mm



911



913

Fuses

BS 646 Fuses

- In compliance BSE46
- For use with shavers, adaptors etc.

1A FUSE E/FS011 - Pack of 10

3A FUSE E/FS031 - Pack of 10

5A FUSE E/FS051 - Pack of 10



1A



3A



5A

BS 1361 Fuses

- In compliance with BS1361
- For use with domestic consumer units

5A FUSE EFL051 - Pack of 10

15A FUSE EFL151 - Pack of 10

20A FUSE EFL201 - Pack of 10

30A FUSE EFL301 - Pack of 10

45A FUSE EFL451 - Pack of 10



5A



15A



20A



30A



45A

BS 1362 Fuses

- In compliance with the relevant British Standards
- For use with 13A plug
- Blister pack of fuses option
- Packed in 10 individual bag option (10x10)
- Bulk bag of 1000 option (10x100)

2A FUSE E/FO210 - Bagged 10 x 10

3A FUSE E/FO304 - Blister 4
E/FO310 - Bagged 10 x 10
E/FO300 - Bulk 10 x 100

5A FUSE E/FO504 - Blister 4
E/FO510 - Bagged 10 x 10
E/FO500 - Bulk 10 x 100

13A FUSE E/F1304 - Blister 4
E/F1310 - Bagged 10 x 10
E/F1300 - Bulk 10 x 100



2A



3A



5A



13A

Commodities

Telephone Accessories

- 1920 Plastic IDC insert tool
- 1923 2-way internal telephone cable junction box



1920



1923

TV Accessories

- 3250 Metal co-axial plug, female
- 3253 Metal co-axial plug, male



3250



3253

Door Bell

- Door bell and push
- 240V mains voltage
- Needs bell wire between door bell and bell push
- 2 tone

- C3500 Door bell and bell push



C3500

Stephen Glover

Conduit Boxes (Malleable)

Extension Rings, Couplers & Bends (Malleable)

Covers, Nipples & Adaptors

Bushes, Locknuts & Lockrings

Saddles & Crampets

Adaptable Boxes

Stocks, Dies And Guides

Incorporated in 1963 and now part of Deta Electrical Company Limited, Stephen Glover offers a vast portfolio of cable management products, giving the range you need at great value for money.

This new VERGLO section is easy to use and gives you a concise description of all products - so selecting what you need could not be simpler!

All our products carry the CE Mark where required and meet relevant British Standards.

SALES SUPPORT

Whether you're a wholesaler, contractor, engineer, specifier or end user, our nationwide team of sales staff are on hand to help you out with product selection, queries or problem solving. If you need an answer, give us a call.

TECHNICAL SUPPORT

If you need installation advice or a problem-solving or technical specification, then call our Technical Support Line. A team of dedicated engineers is permanently on hand to help answer your queries and resolve any issues.

QUALITY ASSURED

Stephen Glover, as an ISO 9001 accredited organisation, ensures that all manufacturing is carried out in a strict quality-controlled environment. All our products are designed to a high specification and checked during production to meet the relevant British Standard, as well as meeting Stephen Glover's own quality control requirements.

Stephen Glover is accredited to ISO 9001:2008 by Lloyds Registered Quality Assurance. All Stephen Glover products carry the CE mark where required, meeting the relevant British Standard.



USEFUL NUMBERS

Sales Hotline: +44 (0) 1582 544 560

Fax Hotline: +44 (0) 1582 544 558

Technical Hotline: +44 (0) 1582 544 548

Email: sales@stephenglover.co.uk

www.detaelectrical.co.uk

Conduit Boxes (Malleable)

Terminal Box (1 Way)

Cat. Code	Size	Pk Qty
V12820G	20mm	10
V12825G	25mm	10
V14532G	32mm	10



Through Box (2 Way)

Cat. Code	Size	Pk Qty
V13020G	20mm	10
V13025G	25mm	10
V14732G	32mm	10



Terminal Extension Box

Cat. Code	Size	Pk Qty
V130A1G	20mm	10
V130A125G	25mm	10



Through Extension Box

Cat. Code	Size	Pk Qty
V130A2G	20mm	10
V130A225G	25mm	10



Terminal & Back Outlet Box

Cat. Code	Size	Pk Qty
V13520G	20mm	10
V13525G	25mm	10



Through & Back Outlet Box

Cat. Code	Size	Pk Qty
V13620G	20mm	10
V13625G	25mm	10



Back Outlet Box (BO)

Cat. Code	Size	Pk Qty
V12920G	20mm	10
V12925G	25mm	10



Technical Information

Verglo Malleable Boxes are:

- Manufactured to BS EN 61386 with resistance to corrosion classification of 4-hot-dipped galvanised, inside and outside
- Cover fixing centres 50.8mm
- Cover fixings M4

Conduit Boxes (Malleable)

Tee Box (3 Way)

Cat. Code	Size	Pk Qty
V13320G	20mm	10
V13325G	25mm	10
V14932G	32mm	10



Angle Box

Cat. Code	Size	Pk Qty
V13120G	20mm	10
V13125G	25mm	10
V14832G	32mm	10



Tee Extension Box

Cat. Code	Size	Pk Qty
V130A3G	20mm	10
V130A325G	25mm	10



Angle Extension Box

Cat. Code	Size	Pk Qty
V130AAG	20mm	10



Tee & Back Outlet Box

Cat. Code	Size	Pk Qty
V13720G	20mm	10
V13725G	25mm	10



Angle & Back Outlet Box

Cat. Code	Size	Pk Qty
V136A20G	20mm	10
V136A25G	25mm	10



Tangent Tee Box

Cat. Code	Size	Pk Qty
V132A20G	20mm	10
V132A25G	25mm	10



Tangent Angle Box

Cat. Code	Size	Pk Qty
V13220G	20mm	10
V13225G	25mm	10



Conduit Boxes (Malleable)

Intersection Box (4 Way)

Cat. Code	Size	Pk Qty
V13420G	20mm	10
V13425G	25mm	10
V15032G	32mm	10



Branch 3 Way Box (Y)

Cat. Code	Size	Pk Qty
V133A20G	20mm	10
V133A25G	25mm	10



Intersection Extension Box

Cat. Code	Size	Pk Qty
V130A4G	20mm	10
V130A425G	25mm	10



Branch 4 Way Box (H)

Cat. Code	Size	Pk Qty
V134A20G	20mm	10
V134A25G	25mm	10



Intersection & B.O. Box

Cat. Code	Size	Pk Qty
V13820G	20mm	10
V13825G	25mm	10



Loop-In Boxes (Malleable)

Cat. Code	Size	Pk Qty
V160M1G	1 Hole	10
V160M2G	2 Hole	10
V160M3G	3 Hole	10
V160M4G	4 Hole	10



Branch 2 Way Box (U)

Cat. Code	Size	Pk Qty
V131A20G	20mm	10
V131A25G	25mm	10



Loop-In Boxes (Pressed Steel)

Cat. Code	Size	Pk Qty
V9221Z	1 Hole	10
V9222Z	2 Hole	10
V9223Z	3 Hole	10
V9224Z	4 Hole	10
V922K0Z	4 Hole KO	10



Extension Rings, Couplers & Bends (Malleable)

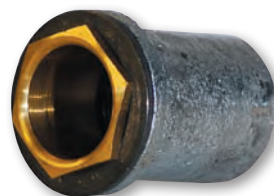
Extension Rings (Steel)

Cat. Code	Size	Pk Qty
V1406Z	6mm	100
V14013Z	13mm	50
V14016Z	16mm	50
V14020Z	20mm	25
V14025Z	25mm	25
V14032Z	32mm	25
V14038Z	38mm	25
V14050Z	50mm	10



Flange Couplers

Cat. Code	Size	Pk Qty
V10920G	20mm	50
V10925G	25mm	50
V10932G	32mm	25



Couplers

Cat. Code	Size	Pk Qty
V10120G	20mm	100
V10125G	25mm	100
V10132G	32mm	50
V10138G	1.5"	20
V10150G	2"	10



Solid Bend

Cat. Code	Size	Pk Qty
V12020G	20mm	20
V12025G	25mm	20
V12032G	32mm	8



Earth Couplers

Cat. Code	Size	Pk Qty
V10520G	20mm	100
V10525G	25mm	100



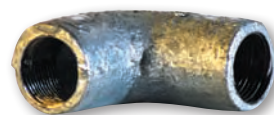
Inspection Bends

Cat. Code	Size	Pk Qty
V12320G	20mm	20
V12325G	25mm	20
V12332G	32mm	8



Solid Elbows

Cat. Code	Size	Pk Qty
V11020G	20mm	25
V11025G	25mm	25
V11032G	32mm	25



Extension Rings, Couplers & Bends (Malleable)

Inspection Elbows

Cat. Code	Size	Pk Qty
V11120G	20mm	25
V11125G	25mm	25
V11132G	32mm	25



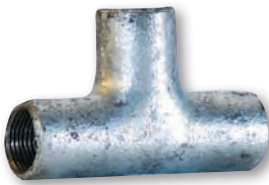
Inspection Tees

Cat. Code	Size	Pk Qty
V11620G	20mm	25
V11625G	25mm	25
V11632G	32mm	25



Solid Tees

Cat. Code	Size	Pk Qty
V11520G	20mm	25
V11525G	25mm	25



Suspension Hooks & Loops

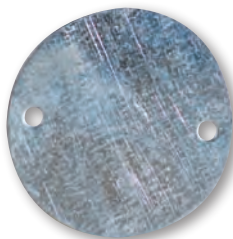
Cat. Code	Size	Pk Qty
V12520G	20mm Hook	100
V12525G	25mm Hook	100
V12720G	32mm Hook	100



Covers, Nipples & Adaptors

Small Box Lid & Rubber Gasket

Cat. Code	Size	Pk Qty
V141G	Light, 2 Hole	100
V1410LG	Overlapping	50
V142G	Heavy, 2 Hole	50
V144AS	Gasket	100



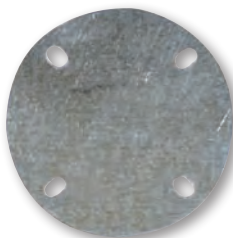
Hookplates - Pre Galvanised

Cat. Code	Size	Pk Qty
V758G	20mm	25



Large Box Lid & Rubber Gasket - 32 mm Boxes

Cat. Code	Size	Pk Qty
V141LG	Light, 4 Hole	50
V141HSG	Heavy, 4 Hole	50
V144ALS	Gasket	50



Standard Steel Nipples - Zinc Plated

Cat. Code	Size	Pk Qty
V10820Z	20mm	100
V10825Z	25mm	100
V10832Z	32mm	50
V10838Z	1.5"	50
V10850Z	2"	20



Female Dome Covers - Malleable

Cat. Code	Size	Pk Qty
V76120G	20mm	20
V76125G	25mm	20



300mm Long Steel Nipples - Zinc Plated

Cat. Code	Size	Pk Qty
V108203Z	20mm	10
V108253Z	25mm	10
V108323Z	32mm	10
V108383Z	1.5"	10



Ball & Socket Cover - Malleable

Cat. Code	Size	Pk Qty
V76220G	20mm	25



Adaptors - Zinc Plated

Cat. Code	Size	Pk Qty
V100S3/4Z	3/4" M x 20mm F	100
V100S20Z	20mm M x 3/4" F	100
V100S1Z	1" M x 25mm F	50
V1002S25Z	25mm M x 1" F	50



Covers, Nipples & Adaptors

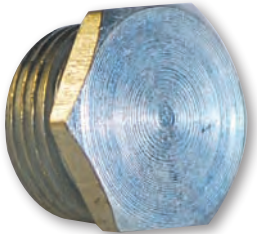
Screwed Reducers
- Zinc Plated

Cat. Code	Size	Pk Qty
V7482016Z	20 x 16mm	100
V7482520Z	25 x 20mm	100
V7483220Z	32 x 20mm	50
V7483225Z	32 x 25mm	50
V7483820Z	1.5" x 20mm	25
V7483825Z	1.5" x 25mm	25
V7483832Z	1.5" x 32mm	25
V7485025Z	2" x 25mm	25
V7485032Z	2" x 32mm	25
V7485038Z	2" x 1.5"	25



Hex Plugs - Zinc Plated

Cat. Code	Size	Pk Qty
V75016Z	16mm	100
V75020Z	20mm	100
V75025Z	25mm	100
V75032Z	32mm	50
V75038Z	1.5"	10
V75050Z	2"	10



Jack Chain - Pre Galvanised

Cat. Code	Size	Pk Qty
V86310G	NO. 10	10m



Bushes, Locknuts & Lockrings

Male Brass Bush - Short

Cat. Code	Size	Pk Qty
V78020S	20mm	100
V78025S	25mm	100
V78032S	32mm	50
V78038S	1.5"	25
V78050S	2"	25



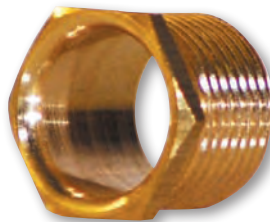
Brass TRS Glands

Cat. Code	Size	Gland Hole ø	Pk Qty
V77620	20mm	7.5mm	100
V77625	25mm	11.5mm	50
V77632	32mm	14.5mm	25



Male Brass Bush - Long

Cat. Code	Size	Pk Qty
V78020L	20mm	100
V78025L	25mm	100
V78032L	32mm	50
V78038L	1.5"	25
V78050L	2"	25



Brass Earth Terminal

Cat. Code	Size	Pk Qty
V799M4	M4	100



Female Brass Bush

Cat. Code	Size	Pk Qty
V78120	20mm	100
V78125	25mm	100
V78132	32mm	50
V78138	1.5"	25
V78150	2"	25



Light Steel Locknuts - Zinc Plated

Cat. Code	Size	Pk Qty
V76320Z	20mm	100
V76325Z	25mm	100
V76332Z	32mm	100
V76338IZ	1.5"	50
V76350IZ	2"	50



Brass Slotted Plugs

Cat. Code	Size	Pk Qty
V78520	20mm	100
V78525	25mm	100
V78532	32mm	50
V78538	1.5"	50
V78550	2"	50



Heavy Steel Locknuts - Zinc Plated

Cat. Code	Size	Pk Qty
V76420Z	20mm	100
V76425Z	25mm	100
V76432Z	32mm	100
V76438IZ	1.5"	50
V76450IZ	2"	50



Bushes, Locknuts & Lockrings

Milled Edge Lockrings
- Zinc Plated

Cat. Code	Size	Pk Qty
V76520Z	20mm	100
V76525Z	25mm	100
V76532Z	32mm	100
V76538Z	1.5"	50
V76550Z	2"	50



Saddles & Crampets

Steel Crampets - Zinc Plated

Cat. Code	Size	Pk Qty
V75720Z	20mm	100
V75725Z	25mm	100



Spacer Bar Saddles - Zinc Plated

Cat. Code	Size	Pk Qty
V75420Z	20mm	100
V75425Z	25mm	100
V75432Z	32mm	25
V75438Z	1.5"	20
V75450Z	2"	20



Twisted Steel Crampets - Zinc Plated

Cat. Code	Size	Pk Qty
V75720TZ	20mm	100
V75725TZ	25mm	100



Heavy Distance Saddles - Malleable

Cat. Code	Size	Pk Qty
V75520G	20mm	100
V75525G	25mm	50
V75532G	32mm	25



Half Saddles - Zinc Plated

Cat. Code	Size	Pk Qty
V75220Z	20mm	100
V75225Z	25mm	100
V75232Z	32mm	100



Hospital Saddles - Malleable

Cat. Code	Size	Pk Qty
V75620G	20mm	50
V75625G	25mm	50
V75632G	32mm	25



Steel Saddles - Zinc Plated

Cat. Code	Size	Pk Qty
V75320Z	20mm	100
V75325Z	25mm	100
V75332Z	32mm	100
V75338Z	1.5"	100
V75350Z	2"	50



Adaptable Boxes

Adaptable Boxes - Knock Out

Cat. Code	Size	Pk Qty
V913K0332G	3" x 3" x 2"	1
V913K0442G	4" x 4" x 2"	1
V913K0443G	4" x 4" x 3"	1
V913K0662G	6" x 6" x 2"	1
V913K0663G	6" x 6" x 3"	1
V913K0664G	6" x 6" x 4"	1
V913K0994G	9" x 9" x 4"	1
V913K012124G	12" x 12" x 4"	1



Knock Out Information

Cat. Code	Size	Pk Qty
V913K0332G	2 x 20mm per side	1
V913K0442G	3 x 20mm per side	1
V913K0443G	3 x 20mm per side	1
V913K0662G	4 x 20mm per side	1
V913K0663G	4 x 20mm per side	1
V913K0664G	4 x 20mm per side	1
V913K0994G	6 x 20mm per side	1
V913K012124G	8 x 20mm per side	1

Adaptable Boxes - Plain

Cat. Code	Size	Pk Qty
V913P332G	3" x 3" x 2"	1
V913P442G	4" x 4" x 2"	1
V913P443G	4" x 4" x 3"	1
V913P662G	6" x 6" x 2"	1
V913P663G	6" x 6" x 3"	1
V913P664G	6" x 6" x 4"	1
V913P994G	9" x 9" x 4"	1
V913P12124G	12" x 12" x 4"	1



Technical Information

Verglo Adaptable Boxes are:

- Pre-galvanised
- Have an IP30 ingress protection rating
- The above shows the most popular selling lines; please contact our sales department for other sizes available in the range

Stocks, Dies & Guides

Stocks, Dies & Guides

Cat. Code	Size	Pk Qty
V86020/25	20mm & 25mm	1
V86032	32mm	1

Dies

Cat. Code	Size	Pk Qty
V860D20	20mm	1
V860D25	25mm	1
V860D32	32mm	1

Stocks

Cat. Code	Size	Pk Qty
V860S42	20mm & 25mm	1
V860S63	32mm	1

Guides

Cat. Code	Size	Pk Qty
V860G20	20mm	1
V860G25	25mm	1
V860G32	32mm	1

Terms and Conditions

DEFINITION

- “The Company” means Deta Electrical Company Limited.
- “The Customer” means the person, firm or other entity which contracts with the Company for the purchase of the Goods.
- “The Goods” means products of any kind manufactured or sold by the Company.

GENERAL

These Terms and Conditions apply to the sale of Goods by the Company and no variation, modification or substitution for these Terms and Conditions (even though included in or referred to in the document placing the order) shall be binding on the Company unless specifically accepted by the Company in writing.

DESCRIPTIONS, ILLUSTRATIONS AND DIMENSIONS

The Customer shall be responsible for ensuring the accuracy of the Terms of any order submitted by it.

The Company shall not be liable for the consequences, of any error or omission in the descriptions, illustrations, dimensions or other information in correspondence, catalogues and any other literature supplied by the Company.

PRICE

The Company reserves the right to vary without notice any price listed or quoted to conform with the Company's price current at the time of acceptance of any order placed by the Customer.

CARRIAGE AND PACKING

Carriage and Packing charges are as contained in the Company price list current at the time of acceptance of the Customer order.

PAYMENT

- Time for payment shall be the essence of the contract. The Customer shall make payment within 30 days from the date of invoice unless contrary terms are agreed in writing by the Company.
- The Customer shall pay interest on the outstanding balance of the invoice value or any part thereof at the rate of 4% above the National Westminster Bank Plc base rate, from time to time, in the period between the due date for payment and final settlement. In these circumstances the Company may suspend deliveries under any or all contracts with the Customer while the Customer is in arrears and/or give notice in writing that if any such sums are not paid within 14 days any or all contracts may be cancelled and hence if all such sums are not paid within that time, the Company may treat any or all such contracts as determined and claim damages for repudiation.
- If the Customer shall fail to make any payment under any contract with the Company by the due date or shall be in breach of these Terms and Conditions or any other term of any contract with the Company or shall the Customer:
 - become insolvent;
 - suffer the appointment of an administrator or an administrative receiver over any of its assets;
 - go into liquidation whether compulsorily or voluntarily (except for the purposes of reconstruction or amalgamation);
 - make any arrangement or composition with its creditors;
 - become the subject of a bankruptcy order;
 - cease, or threaten to cease, to carry on business; or shall the Company reasonably apprehend that any of the events mentioned above is about to occur in relation to the Customer and notifies the Customer accordingly then the Company shall have the right (without prejudice to any other rights and remedies):
 - to suspend or withhold further deliveries so long as the default continues, and/or;
 - to serve notice on the Customer that unless all sums due are paid forthwith it will cancel the relevant contract and any other contract with the Customer and if payment is not made forthwith thereafter the Company may treat the relevant contract and also

- at its option any other contract as repudiated and determined and recover damages accordingly, and/or;
 - to recover from the Customer any cost or expenses incurred should a third party agency be used in the collection of any monies due from the Customer, and/or;
 - enter the Customer's premises for the purpose of repossessing the Goods in respect of which title has not yet passed.
- Waiver by the Company of any breach of these conditions or any granting of time or indulgence by the Company to the Customer shall in no way affect the rights of the Company hereunder.

EXPORT ORDERS

The Company is under no obligation to despatch an export order until the Customer has provided the Company with a confirmed and irrevocable Letter of Credit, the terms of which are satisfactory to the Company.

DELIVERY AND PERFORMANCE

- The Customer shall be bound to accept the Goods when they are ready for delivery by the Company and delivery shall be deemed to take place when the Goods are delivered to the Customer at the nominated address for delivery or to a nominated carrier as the case may be.
- The Company reserves the right to deliver and/or invoice the Goods by instalments and each delivery shall constitute a separate contract, any failure of or defect in any one delivery shall not vitiate any contract in respect of that or any other delivery.
- Claims by the Customer for shortages in delivery cannot be accepted unless they are received by the Company within 7 days of the date of receipt of the Goods at the Customer's premises.
- If for any reason the Customer cannot accept delivery of the Goods at the time when the Goods are due and ready for delivery, the Company may either elect to store the Goods pending their actual delivery and the Customer shall be liable to the Company for the cost (including insurance) of their so doing (however the Company shall be under no obligation to insure the Goods in storage and the risk of any loss or damage to the Goods howsoever arising shall be borne by the Customer) or sell the Goods at the best price readily obtainable and (after deducting all reasonable storage and selling expenses) account to the Customer for the excess over the relevant invoice price or charge the Customer for any shortfall below the relevant invoice price.
- Any time or date given for delivery or performance is given as an estimate only and is not the essence of the contract and the Company shall not be liable for any loss or damage howsoever arising as a result of failure to deliver or perform at such time or date.
- The Company shall not be liable for loss of profit or other consequential loss and its liability (whether in contract or otherwise) shall in no case exceed the price of the goods which it has failed to deliver or delivered late.

TITLE

- Title to the Goods shall not pass to the Customer until the Company has received in cash or cleared funds payment in full of the invoice together with any interest and/or delivery charges in addition to payment of all other outstanding sums. Where the Customer is entitled to sell the Goods as the Company's agent, the Customer must be obliged to immediately thereafter account to the Company for such of the proceeds of sale as shall be sufficient to discharge the invoice
- Where the Goods are in the Customer's possession, the Customer shall keep them separately from all other Goods in its possession in such a way that they are immediately identifiable as the Company's property. At any time before payment in full of all sums due from the Customer to the Company, the Company may by notice in writing to the Customer, determine the Customer's right to sell the Goods and if the Customer is in possession of the Goods the Customer shall thereupon return them to the Company free of charge and shall in any event cease to be in possession of them with its consent. In placing an order the Customer irrevocably

authorises the Company to enter upon its premises for the purposes of repossessing the Goods in respect of which title has not yet passed to the Customer.

RISK

- Risk in the Goods shall pass to the Customer either at the time of delivery, or if the Customer wrongfully fails to take delivery of the Goods, the time when the Company has tendered delivery of the Goods.
- The Customer shall insure those Goods to the full purchase price for the period from the date of delivery until the passing of title in the Goods to the Customer against all loss or damage.
- The proceeds of any insurance claim or the right to receive the same shall be held by the Customer on trust for the Company and paid to it in settlement of the outstanding invoice.

RETURNS

- Goods will not be accepted back for credit unless written approval has been obtained.
- A 20% handling charge subject to a minimum of £50.00 may be levied on all fault free Goods returned at the Customer's request. Any such Goods should be returned carriage paid and must be in original undamaged packaging and of full box quantities.
- Excluding Goods returned under b. the Company reserves the right to replace any Goods returned for credit and where no fault has been found with the Goods the Company will be entitled to levy an additional £50.00 handling charge.
- If Goods are returned without the correct authorisation the reimbursement of any carriage charges, if appropriate, will be limited to the amount that the Company would have incurred had the Company been given the opportunity to arrange their own collection.

GUARANTEE

- The Company guarantees at its entire discretion either to replace or repair any of the Goods which within the Guarantee period of the Goods are shown to its satisfaction to be defective through faulty material or workmanship alone, provided that no attempt has been made by the Customer or a third party to rectify, dismantle or alter the Goods in any way.
- The Guarantee period for any Goods is as specified in the Company's catalogue current at the time of acceptance of the Customer order and commences on delivery of the Goods.
- All terms, conditions, warranties, or representations, whether express or implied, as to description, condition, quality or fitness for purpose of any of the Goods are hereby excluded.
- So far as permitted by statute, the Company shall not be liable for loss or damage whether direct or consequential and whether suffered by or occasioned to the Customer, its employees or agents, or to any third party.

SUSPENSION

- Should the Company be delayed in or unable to make delivery owing to any cause whatsoever beyond its control, the Company shall be free at its entire discretion either to suspend or terminate the contract without incurring any liability to the Customer for any loss or damage therefrom.
- All contracts between the Company and the Customer and the above conditions shall be interpreted according to and governed by English Law and the parties submit to the jurisdiction of the High Court of Justice for the resolution of all disputes arising therefrom.

DETA

Deta Electrical Company Limited
Kingsway House, Laporte Way,
Luton, Bedfordshire LU4 8RJ, UK

T +44 (0) 1582 544500

F +44 (0) 1582 544501

E sales@detaelectrical.co.uk

www.detaelectrical.co.uk

